

LIUGONG

9035FzTs EXCAVATOR

FSERIES

Engine	YANMAR 3TNV88F-ESLY
Rated Power	18.2 kW
Operating Weight	3,540 kg - Canopy 3,800 kg - Cab
Bucket Capacity	0.045-0.18 m ³



TOUGH WORLD. TOUGH EQUIPMENT.

BUILT FOR THE TOUGHEST APPLICATIONS

For over 65 years, LiuGong has built machines that thrive in the toughest environments. The 9035FzTs, part of our advanced F-Series, is engineered for maximum power, precision, and durability.

Designed to excel in urban construction, landscaping, and utility tasks, this machine combines cutting-edge technology with proven reliability to keep you working efficiently in even the harshest conditions.

Since launching our first hydraulic excavator in 1992, we've remained committed to innovation, ensuring every LiuGong machine is built to perform, wherever the job takes you.



YOUR PERFORMANCE DASHBOARD

Research tells us that 5 key performance areas really matter to you. We'd like to use this performance dashboard to present the real, tough facts about our new 9035FzTs.



EFFICIENCY & RELIABILITY



FLEXIBILITY & MANEUVERABILITY



COMFORT & SAFETY



UPTIME & MAINTENANCE



PARTS & AFTER-SALES SERVICE

THIS IS LIUGONG



65+
YEARS
EST 1958



30+
PRODUCT LINES



12
GLOBAL R&D CENTERS



30+
GLOBAL OFFICES



16,000+
EMPLOYEES



20+
GLOBAL MANUFACTURING FACILITIES

THE 9035FzTs IN ACTION...

The LiuGong 9035FzTs is a 3.5-ton zero-tail-swing compact excavator engineered for precision work in confined spaces. Its fuel-efficient engine, zero-tail-swing design, and multi-attachment versatility make it ideal for contractors, municipalities, and rental fleets.



LET'S TAKE A CLOSER LOOK...



EFFICIENCY & RELIABILITY

Optimized Yanmar EU Stage V power and precision hydraulics paired with reinforced structures ensure durable, high-performance operation across diverse terrains.

- ▶ The Yanmar 3TNV88F-ESLY EU Stage V engine delivers unmatched performance.
- ▶ The advanced hydraulic system, coupled to the engine, enables fast response and smooth operation.
- ▶ High-tensile steel components make the structures tough and durable.



FLEXIBILITY & MANEUVERABILITY

Zero-tail agility with optimized boom articulation ensures confident operation and extended reach in confined spaces, maximizing productivity on complex job sites.

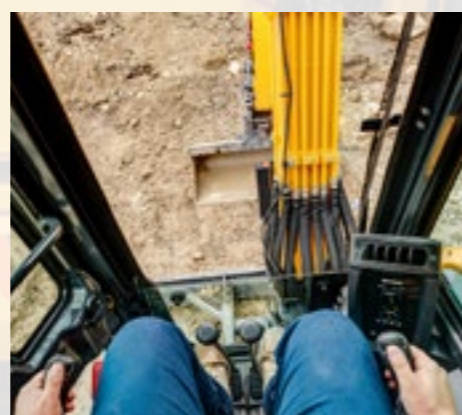
- ▶ Zero-tail swing allows for working in tight spaces with ease.
- ▶ Boom swing provides the maneuverability needed for working in confined areas.
- ▶ Optimized routing and long arm option extend the dig-end working range.



COMFORT & SAFETY

Certified operator environment with climate control, panoramic visibility, and intuitive controls ensures fatigue-free precision in confined spaces year-round.

- ▶ The ergonomic cab design incorporates user-friendly features, enhancing operator comfort.
- ▶ Cooling and heating air conditioning ensures all-weather operator comfort.
- ▶ Panoramic windows maximize visibility.
- ▶ Low-effort joystick allows easy control.



UPTIME & MAINTENANCE

Extended operational continuity through large-capacity fueling, ground-accessible servicing, and intelligent component protection minimizes downtime while maximizing lifecycle durability across demanding work cycles.

- ▶ Large capacity fuel tank extends re-fueling periods.
- ▶ Centralized greasing makes easy greasing.
- ▶ Daily inspection and maintenance could be performed at ground-level.
- ▶ Standard LED work lights extends service life.



PARTS & AFTER-SALES SERVICE

Seamless attachment versatility and global support infrastructure ensure uninterrupted productivity through genuine components and rapid response.

- ▶ Quick coupler allows quick attachment change.
- ▶ Multiple attachments enable operational versatility across diverse work environments.
- ▶ The proportional dozer blade enables precise grading control.
- ▶ World-wide after-sales service network provides superior support.



9035F_{ZTS} SPECIFICATIONS

Operating weight	3,540 kg - Canopy
	3,800 kg - Cab

Operating weight includes coolant, lubricants, full fuel tank, cab, standard shoes, boom, arm, bucket and operator 75 kg.

Bucket capacity	0.045-0.18 m ³
-----------------	---------------------------

ENGINE

Description

Yanmar EPA Tier 4 final / EU Stage V, 4-cylinder, 4 stroke direct injection diesel engine.

Emission rating	EPA Tier 4F / EU Stage V
-----------------	--------------------------

Engine manufacturer	Yanmar
---------------------	--------

Engine model	3TNV88F-ESLY
--------------	--------------

Aspiration	Natural
------------	---------

Cooling fan drive	Direct
-------------------	--------

Displacement	1.64 L
--------------	--------

Engine output - net	17.3 kW @ 2,200 rpm
---------------------	---------------------

Engine output - gross	18.2 kW @ 2,200 rpm
-----------------------	---------------------

Maximum torque	94.2 N·m @ 1,320 rpm
----------------	----------------------

Bore × Stroke	88 × 90 mm
---------------	------------

UNDERCARRIAGE

Track shoe pitches	44
--------------------	----

Shoe width, triple grouser	300 mm
----------------------------	--------

Bottom rollers each side	4
--------------------------	---

Top rollers each side	1
-----------------------	---

SWING SYSTEM

Description

Planetary gear reduction driven by high torque axial piston motor with spring applied parking brake; Hydraulic oil lubricate.

Swing speed	10 rpm
-------------	--------

Swing torque	8,009 N·m
--------------	-----------

HYDRAULIC SYSTEM

Main pump

Type	Variable displacement piston pump
------	-----------------------------------

Maximum flow	99 L/min
--------------	----------

Relief valve setting

Implement	25.3 MPa
-----------	----------

Travel circuit	24.5 MPa
----------------	----------

Slew circuit	20.6 MPa
--------------	----------

Pilot circuit	3.5 MPa
---------------	---------

Hydraulic cylinders

Boom cylinder – Bore × Stroke	φ90 × 507 mm
-------------------------------	--------------

Arm cylinder – Bore × Stroke	φ80 × 590 mm
------------------------------	--------------

Bucket cylinder – Bore × Stroke	φ70 × 465 mm
---------------------------------	--------------

Dozer Cylinder – Bore×Stroke	φ100 ×142 mm
------------------------------	--------------

Swing Cylinder – Bore×Stroke	φ80 × 400 mm
------------------------------	--------------

ELECTRIC SYSTEM

System voltage	12 V
----------------	------

Batteries	12 V
-----------	------

Alternator	12 V-55 A
------------	-----------

Start motor	12 V-1.7 kW
-------------	-------------

SERVICE CAPACITIES

Fuel tank	55 L
-----------	------

Engine oil	6.7 L
------------	-------

Cooling system	7 L
----------------	-----

Hydraulic reservoir	42 L
---------------------	------

Hydraulic system total	58 L
------------------------	------

SOUND PERFORMANCE

Interior sound power level (ISO 6396)	78 dB(A)
---------------------------------------	----------

Exterior sound power level (ISO 6395)	94 dB(A)
---------------------------------------	----------

DRIVE AND BRAKES

Description

2-speed drive motors allow auto speed shifting. Each motor is equipped with a hydraulic released, spring applied parking brake.

Max. travel speed	High: 4.2 km/h Low: 2.3 km/h
-------------------	---------------------------------

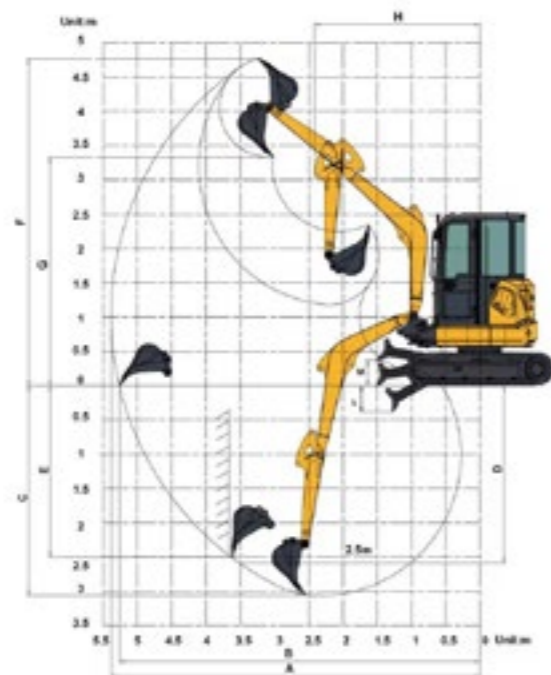
Gradeability	30%/58%
--------------	---------

Max. drawbar pull	37.5 kN
-------------------	---------

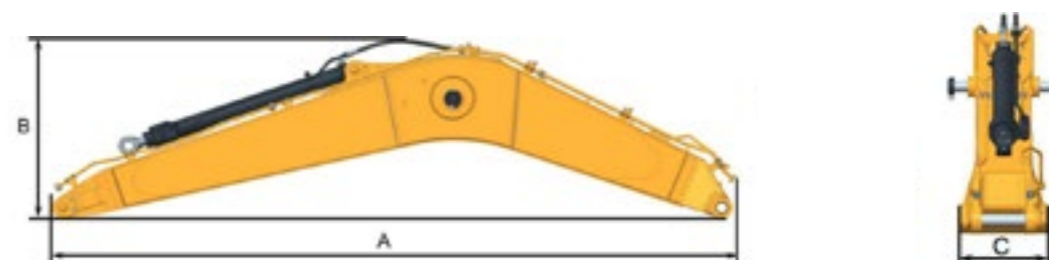


DIMENSIONS

Boom	2,450 mm	
Arm Options	1,320 mm	1,700 mm
A Shipping Length	4,810 mm	4,860 mm
B Shipping Height – Top of Cab	2,500 mm	
C Track Gauge	1,400 mm	
D Undercarriage Width	1,700 mm	
E Length to Center of Rollers	1,675 mm	
F Track Length	2,100 mm	
G Overall Width of Upper Structure	1,600 mm	
H Tail Swing Radius	850 mm	
I Counterweight Ground Clearance	580 mm	
J Height – Top of Boom	1,685 mm	
K Min. Ground Clearance	258 mm	
L Track Shoe Width	300 mm	



WORKING RANGE		
Boom		2,450 mm
Arm options	1,320 mm	1,700 mm
A. Max. digging reach	5,385 mm	5,715 mm
B. Max. digging reach on ground	5,270 mm	5,603 mm
C. Max. digging depth	3,085 mm	3,440 mm
D. Max. digging depth (2.44 m level)	2,610 mm	3,019 mm
E. Max. vertical wall digging depth	2,503 mm	2,713 mm
F. Max. cutting height	4,710 mm	4,843 mm
G. Max. dumping height	3,310 mm	3,463 mm
H. Min. front swing radius	2,416 mm	2,413 mm
L. Dozer-Down	390 mm	390 mm
M. Dozer-Up	370 mm	370 mm
Bucket Digging Force (ISO, kN)	33 kN	30 kN
Stick Digging Force (ISO, kN)	22 kN	17.8 kN
Bucket Capacity	0.11 m ³	0.07 m ³
Bucket Tip Radius	725 mm	725 mm



BOOM DIMENSIONS	
Boom	2,450 mm
Length	2,548 mm
Height	806 mm
Width	273 mm
Weight	142 kg

Includes arm cylinder, piping and pin, excludes boom cylinder pin.

ARM DIMENSIONS		
Arm	1,320 mm	1,700 mm
Length	1,706 mm	2,100 mm
Height	392 mm	392 mm
Width	145 mm	145 mm
Weight	78 kg	97 kg

Includes bucket cylinder, linkage and pin.

MACHINE WEIGHTS AND GROUND PRESSURE			
Shoe width	Operating weight	Ground pressure	Overall width
	2,450 mm boom, 1,320 mm arm, 0.11 m ³ bucket, 560 kg counterweight		
300 mm Cab	3,800 kg	35 kPa	1,675 mm
300 mm Canopy	3,540 kg	34 kPa	1,675 mm

BUCKET SELECTION GUIDE					
Bucket Type	Capacity	Cutting Width	Weight	Teeth pcs	2,450 mm Boom 1,320 mm, 1,700 mm Arm
General purpose	0.07 m ³	458 mm	82 kg	EA	A
General Purpose	0.11 m ³	610 mm	101 kg	3/4	A
Digging	0.045 m ³	305 mm	62 kg	4	A/B
Digging	0.065 m ³	458 mm	76 kg	2	A/B
Grading	0.14 m ³	830 mm	205 kg	3	A
Ditch Cleaning	0.18 m ³	1,000 mm	160 kg	/	A

The recommendations are given as a guide only, based on typical operation conditions. Bucket capacity based on ISO 7451, heaped material with a 1:1 angle of repose.

Maximum material density:
 A. 1,200-1,300 kg/m³ : Coal, Caliche, Shale
 B. 1,400-1,600 kg/m³ : Wet earth and clay, limestone, sandstone
 C. 1,700-1,800 kg/m³ : Granite, wet sand, well blasted rock
 D. 1,900 kg/m³ : Wet mud, Iron ore
 NA. Not applicable

Lifting capacity at the arm end without bucket.
For lifting capacity including bucket, weight of the bucket or the bucket with quick coupler must be deducted from the lifting capacities.
Lifting capacities are based on the machine standing on a firm, uniform supporting surface.



Rating over-front (Cf)



Rating over-side (Cs)

1. Do not attempt to lift or hold any load that is greater than these rated values at their specified load radius and height. Weight of all accessories must be deducted from the above lifting capacities.
2. The rated loads are in compliance with ISO 10567 Hydraulic Excavator Lift Capacity Rating Standard. They do not exceed 87% of hydraulic lifting capacity or 75% tipping load.
3. Ratings at bucket lift hook.

4. Lifting capacities are based on machine standing on level, firm and uniform ground.
5. *Indicates the load is limited by hydraulic capacity rather than tipping capacity.
6. Operator should be fully acquainted with the Operator's and Maintenance Instructions before operating this machine and rules for the safe operation of equipment should be adhered to at all times.

Lifting capacity at the arm end without bucket.
For lifting capacity including bucket, weight of the bucket or the bucket with quick coupler must be deducted from the lifting capacities.
Lifting capacities are based on the machine standing on a firm, uniform supporting surface.



Rating over-front (Cf)



Rating over-side (Cs)

1. Do not attempt to lift or hold any load that is greater than these rated values at their specified load radius and height. Weight of all accessories must be deducted from the above lifting capacities.
2. The rated loads are in compliance with ISO 10567 Hydraulic Excavator Lift Capacity Rating Standard. They do not exceed 87% of hydraulic lifting capacity or 75% tipping load.
3. Ratings at bucket lift hook.

4. Lifting capacities are based on machine standing on level, firm and uniform ground.
5. *Indicates the load is limited by hydraulic capacity rather than tipping capacity.
6. Operator should be fully acquainted with the Operator's and Maintenance Instructions before operating this machine and rules for the safe operation of equipment should be adhered to at all times.

LIFTING CAPACITY (METRIC)

9035F_{ZTS} with 300 mm Shoes, 2,450 mm Boom, 1,320 mm Arm

Conditions

Boom length: 2,450 mm
Arm length: 1,320 mm
Bucket: 0.11 m³
Shoes: 300 mm
Unit: kg



Blade Down

A (Unit: m)

B (m)		2.0		3.0		4.0		MAX REACH		A (m)
		Cf	Cs	Cf	Cs	Cf	Cs	Cf	Cs	
3.0	kg					*650	490	*660	450	4.2
2.0	kg			*840	780	*700	480	*670	370	4.6
1.0	kg			*1,050	720	*820	460	*690	340	4.7
GROUND LEVEL	kg	*1,730	1,270	*1,390	680	*900	440	*720	340	4.6
-1.0	kg	*2,400	1,290	*1,330	670	*830	440	*750	410	4.2

Blade Up

A (Unit: m)

B (m)		2.0		3.0		4.0		MAX REACH		A (m)
		Cf	Cs	Cf	Cs	Cf	Cs	Cf	Cs	
3.0	kg					630	490	580	450	4.2
2.0	kg			*840	780	620	480	490	370	4.6
1.0	kg			950	720	600	460	460	340	4.7
GROUND LEVEL	kg	*1,730	1,270	910	680	580	440	460	340	4.6
-1.0	kg	1,780	1,290	900	670	580	440	550	410	4.2

LIFTING CAPACITY (METRIC)

9035F_{ZTS} with 300 mm Shoes, 2,450 mm Boom, 1,700 mm Arm

Conditions

Boom length: 2,450 mm
Arm length: 1,700 mm
Bucket: 0.07 m³
Shoes: 300 mm
Unit: kg



Blade Down

A (Unit: m)

B (m)		2.0		3.0		4.0		MAX REACH		A (m)
		Cf	Cs	Cf	Cs	Cf	Cs	Cf	Cs	
3.0	kg					*494	493	*519	472	4.4
2.0	kg					*577	548	*555	394	4.8
1.0	kg	2,200	1,530	*1,018	820	*722	520	*603	367	4.9
GROUND LEVEL	kg	*2,843	1,409	*1,315	762	*844	493	*657	369	4.8
-1.0	kg	*2,658	1,404	*1,375	742	*857	482	*724	418	4.4

Blade Up

A (Unit: m)

B (m)		2.0		3.0		4.0		MAX REACH		A (m)
		Cf	Cs	Cf	Cs	Cf	Cs	Cf	Cs	
3.0	kg					*494	493	*519	472	4.4
2.0	kg					*577	548	521	394	4.8
1.0	kg	2,101	1,530	1,018	820	684	520	490	367	4.9
GROUND LEVEL	kg	1,965	1,409	1,018	762	657	493	495	369	4.8
-1.0	kg	1,960	1,404	997	742	645	482	560	418	4.4

STANDARD EQUIPMENT

ENGINE SYSTEM

Double elements air filter
Fuel pre-filter with fuel water separator
Electronic throttle
Automatic preheating
Engine overheat prevention system
Auto-idle speed control
Engine oil low pressure protection
Alarm: oil pressure, low fuel level, clogged air filter, overheating, etc

OPERATOR STATION

Canopy
Mechanical suspension seat with 2 inch red retractable seatbelt
Adjustable Left-handside armrest
Travel lever with foldable travel pedal
Emergency escape and escape hammer
AM/FM radio with USB input and Bluetooth
Fire extinguisher

ELECTRICAL SYSTEM

Negative switch
12 V power source
Maintenance-free battery
Boom working light guard
Rotating beacon
Machine startup password
Power modes (ECO/STD) LCD display
2 LED lights on the front of the canopy
Seatbelt beacon
Travel alarm
Overload warning

UNDERCARRIAGE

300 mm rubber track shoes
Long dozer blade w/o float function

HYDRAULIC SYSTEM

Dual-way auxiliary circuit via electronic proportional joystick control
On-screen auxiliary line switching, one-way or two-way
High pressure quick coupler lines
Quick coupler on warning
Boom cylinder guard
Dozer blade cylinder guard
Pilot hydraulic oil preheating
2-speed travel with auto-shift
Electro-proportional joystick controlled boom swing
Arm load holding valve
Boom load holding valve
Dozer blade load holding valve

BOOM AND ARM

2,450 mm boom
1,320 mm arm

OTHERS

Grease gun holder
Tool box & Tool kit
Counterweight 560 kg

OPTIONAL EQUIPMENT

ENGINE SYSTEM

Refuelling pump

ELECTRICAL SYSTEM

T-BOX

OPERATOR STATION

TOPS Cab with heating and cooling air conditioning
Rear-view mirror at the rear of the cab
Front guard
Top guard

ATTACHMENT

0.07 m ³ digging bucket (width, 446 mm) with 3 teeth
0.07 m ³ digging bucket (width, 446 mm) with 4 teeth
0.11 m ³ digging bucket (width, 610 mm) with 4 teeth and side teeth
0.065 m ³ trenching bucket (width, 405 mm) with 3 teeth and lifting hole
0.045 m ³ digging bucket (width, 300 mm) with 2 teeth and lifting hole
0.045 m ³ earth-moving bucket (width, 1000 mm) with no teeth and replaceable main blade
Breaking hammer, LGB53
Mechanical quick coupler
Hydraulic quick coupler

DIGGING EQUIPMENT

Additional counterweight, 270 kg
Arm, 1,700 mm

HYDRAULIC SYSTEM

Arm cylinder guard
Bucket cylinder guard
Auxiliary rotation line with on-screen flow adjustment
Attachment oil drain line
Low pressure quick coupler lines

UNDERCARRIAGE

300 mm steel track shoes
300 mm steel track shoes with rubber pads





Guangxi LiuGong Machinery Co., Ltd.
No. 1 Liutai Road, Liuzhou, Guangxi 545007, PR China
T: +86 772 388 6124 E: overseas@liugong.com
www.liugong.com

Like and follow us:



LG-PB-9035F_{ZTS}-Stage V-A4-082025-ENG

The LiuGong series of logos herein, including but not limited to word marks, device marks, letter of alphabet marks and combination marks, as the registered trademarks of Guangxi LiuGong Group Co., Ltd. are used by Guangxi LiuGong Machinery Co., Ltd. with legal permission, and shall not be used without permission. Specifications and designs are subject to change without notice. Illustrations and pictures may include optional equipment and may not include all standard equipment. Equipment and options varies by regional availability.