



Engine	Cummins L9
Max. Gross	223 kW (299 hp / 303 ps) @ 1,700 rpm
Operating Weight	26,275 kg
Standard Bucket Size	4.7 m ³
Standard Breakout Force	206 kN
Standard Dump Clearance	3,319 mm

877T WHEEL LOADER

877T SPECIFICATIONS >>>

ENGINE

Emission Regulation	EU Stage V
Manufacturer	Cummins
Model	L9
Max. Gross	223 kW (299 hp / 303 ps) @ 1,700 rpm
Peak Torque	1,636 N·m @ 1,100 rpm
Displacement	8.9 L
Number of Cylinders	6
Aspiration	Turbocharged & Air-to-air intercooled

TRANSMISSION

Transmission Type	Countershaft, powershift
Torque Converter	Single stage, three elements
Maximum Travel Speed, fwd	40 km/h
Maximum Travel Speed, rev	27 km/h
Number of Speed, fwd	5
Number of Speed, Rev	3

AXLES

Differential Front Type	Limited slip
Differential Rear Type	Limited slip
Axle Oscillation	±12°

STEERING

Steering Hydraulic System	Load sensing steering
Steering Relief Pressure	20.7 MPa

BRAKES

Service Brake Type	Wet discs brake
Service Brake Actuation	Full hydraulic
Parking Brake Type	Caliper discs brake
Parking Brake Actuation	Electro-hydraulic release

HYDRAULIC SYSTEM

Main Pump Type	Piston
Main Relief Pressure	28 MPa
Raise	5.8 s
Dump Time	1.4 s
Float Down Time	3.4 s
Hydraulic Cycle Time	10.6 s

LOADER ARM PERFORMANCE WITH STANDARD BUCKET 4.7 m³

Tipping Load - Straight (ISO 14397-1:2007)	19,600 kg
Tipping Load - Full Turn (ISO 14397-1:2007)	17,200 kg
Bucket Breakout Force	206 kN
A Maximum Hinge Pin Height	4,638 mm
B Dump Clearance at Full Height Discharge	3,319 mm
C Dump Reach at Full Height Discharge	1,237 mm
D Maximum Digging Depth, Bucket Level	100 mm
S ₁ Rollback at Ground Level	44°
S ₂ Bucket Rollback at Carry	48°
S ₃ Bucket Rollback at Maximum Height	58°
S ₄ Maximum Dump Angle at Full Height	45°

BUCKET PERFORMANCE

Reference Bucket	3.5-7.0 m³
------------------	------------

DIMENSIONS

E Ground Clearance	490 mm
G Wheelbase	3,765 mm
H Cab Height	3,660 mm
J Wheel Tread	2,270 mm
K Width over Tires	2,970 mm
L Length with Bucket Down	9,671 mm
M Turn Angle, Either Side	38°
P Rear Angle of Departure	25°
R ₁ Turning Radius, Bucket Carry	7,863 mm
R ₂ Turning Radius, Outside of Tire	6,981 mm
W Width over Bucket	3,190 mm

TIRES

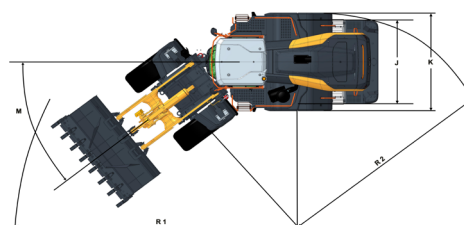
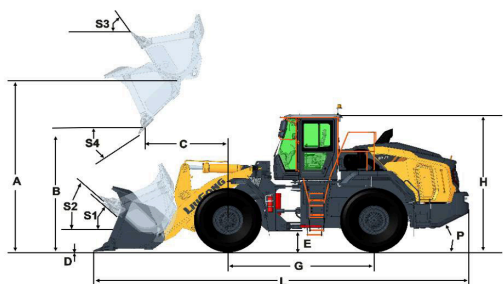
Tire Size	26.5R25
-----------	---------

OPERATING WEIGHTS

Operating Weight	26,275 kg
------------------	-----------

SERVICE CAPACITY

Fuel Tank	420 L
Engine Oil	25 L
DEF Tank	50 L
Cooling System	36 L
Hydraulic System	306 L
Transmission and Torque Converter	50 L
Axles, Front/Rear	42 L / 42 L



Guangxi Liugong Machinery Co., Ltd.

No. 1 Liutai Road, Liuzhou, Guangxi 545007, PR China
 T: +86 772 3886124 E: overseas@liugong.com
 www.liugong.com

Specifications and designs are subject to change without notice. Machines shown may include optional equipment. Liugong standard and optional equipment may vary from region to region. Please consult your Liugong dealer for information specific to your area. Engine power kW is converted to horsepower (1 kW=1.3596 ps and 1 kW=1.3410 hp) in this file.

11/2025 Designed by LiuGong
 Replace the previous versions of 10/2025