

LIUGONG

909FCR EXCAVATOR

F-SERIES

Engine	YANMAR 4TN98CT-7V
Rated Power	53.3 kW @ 2,000 rpm
Operating Weight	8,700 - 11,200 kg
Bucket Capacity	0.17-0.5 m ³



TOUGH WORLD. TOUGH EQUIPMENT.

BUILT FOR THE TOUGHEST APPLICATIONS

For over 65 years, LiuGong has built machines that thrive in the toughest environments. The 909FCR, part of our advanced F-Series, is engineered for maximum power, precision, and durability.

Designed to excel in demanding applications, this machine combines cutting-edge technology with proven reliability to keep you working efficiently in even the harshest conditions.

Since launching our first hydraulic excavator in 1992, we've remained committed to innovation, ensuring every LiuGong machine is built to perform, wherever the job takes you.



YOUR PERFORMANCE DASHBOARD

Research tells us that 6 key performance areas really matter to you. We'd like to use this performance dashboard to present the real, tough facts about our 909FCR.



PERFORMANCE & PRODUCTIVITY



HYDRAULICS & CONTROL



VERSATILITY & EFFICIENCY



SAFETY & VISIBILITY



ERGONOMICS & COMFORT



RELIABILITY & MAINTENANCE



THIS IS LIUGONG



65+
YEARS
EST 1958



30+
PRODUCT LINES



12
GLOBAL R&D CENTERS



30+
GLOBAL OFFICES



16,000+
EMPLOYEES



20+
GLOBAL MANUFACTURING FACILITIES

THE 909FCR IN ACTION...

The 909FCR is LiuGong's new 9-ton F-series compact excavator. Featuring a 15% power boost, advanced electro-hydraulic controls, and a spacious mid-size class cab, it delivers superior efficiency and productivity in road construction, pipeline trenching, and general earthmoving applications.



LET'S TAKE A CLOSER LOOK...



PERFORMANCE & PRODUCTIVITY

- ▶ The new 909FCR delivers 15% more power and 28% more torque for unmatched efficiency on tough jobs – enabling higher breakout force and greater lifting capacity with lower fuel consumption.
- ▶ With 11% more hydraulic flow than E-series, the machine provides the hydraulic flow for heavy-duty hammers, shears and other demanding attachments.
- ▶ The optimized blade design creates a smooth, wave-like flow of material, reducing spillage over the top and behind the blade. This improves dozing efficiency and minimizes the need for extra passes to clean up spilled material.



HYDRAULICS & CONTROL

- ▶ The standard electro-hydraulic system delivers faster response and smoother operation than pilot-controlled systems.
- ▶ The operators are able to tailor the machine hydraulic characteristics to meet application requirements and varying operating preferences.
- ▶ The standard 7" touch screen puts intuitive control and one-touch machine start at your fingertips—managing everything from air conditioning to attachment flow settings with less effort.



VERSATILITY & EFFICIENCY

- ▶ Dual auxiliary lines, rotation lines, case drain line and hydraulic quick coupler lines are ready for quick attachment changes to maximum versatility.
- ▶ The optional two-piece boom enhances job site versatility extends the machine working range for high-reach or long-distance tasks. This eliminates the need for multiple purpose-built machines.
- ▶ The demolition spec equips the 909FCR for high-reach breaking, material handling, and debris cleanup without field modifications or downtime between applications.



SAFETY & VISIBILITY

- ▶ Standard LED work lights on both sides of the boom improve illumination in low-light conditions.
- ▶ Zero tail swing design minimizes overhang risk at the rear in urban and tight space operations.
- ▶ Wide-angle rear-view mirror and blind-spot mirrors minimise blind areas around the machine.
- ▶ Standard rear-view camera and optional 360-degree cameras reduce risk of accidents in confined spaces or complex jobsites.
- ▶ For enhanced stability and jobsite safety, the optional extra counterweight delivers greater control and confidence during every swing.



ERGONOMICS & COMFORT

- ▶ The new cab features 7 air conditioning vents with upper-body airflow to deliver rapid cooling, enhancing operator comfort and keeping them focused even in hot weather.
- ▶ An integrated, adjustable air-suspension seat with tilting pod delivers enhanced elbow support and superior comfort to minimize operator fatigue.
- ▶ Armrest-integrated storage, a larger cup holder, and a phone connector with Type-C, USB, and AUX ports keep essentials within easy reach – reducing distraction and supporting all-day connectivity.



RELIABILITY & MAINTENANCE

- ▶ Improved cab sealing effectively preventing dust, mud, and rainwater from entering into the cab. This protection enhances interior durability and ensures a cleaner operator environment.
- ▶ Optimized service access design on the side and rear provides easier maintenance of the main pump, wiper fluids filter, engine, radiator etc.
- ▶ Fuses and ECU are centrally located for easy access to quick checks and faster diagnostics, reducing downtime and maximizing uptime.



909F_{CR} SPECIFICATIONS

Operating weight	8,700 - 11,200 kg
------------------	-------------------

Operating weight includes coolant, lubricants, full fuel tank, cab, standard shoes, boom, arm, bucket and operator 75 kg.

Bucket capacity	0.17-0.5 m ³
-----------------	-------------------------

ENGINE

Description

YANMAR EU Stage V, 4-cylinder straight, Turbocharger, high pressure common rail, electronically controlled direct injection.

Air cleaner: Donaldson FPG air filter.

Emission rating	EU Stage V / EPA Tier4F
-----------------	-------------------------

Engine manufacturer	YANMAR
---------------------	--------

Engine model	4TN98CT-7V
--------------	------------

Aspiration	Turbocharger
------------	--------------

Cooling fan drive	Direct drive
-------------------	--------------

Displacement	3.3 L
--------------	-------

Engine output - gross (SAE J1995 / ISO 14396)	53.3 kW @ 2,000 rpm
---	---------------------

Maximum torque	308 N-m @ 1,365 rpm
----------------	---------------------

Bore x stroke	98 x 110 mm
---------------	-------------

DRIVE AND BRAKES

Description

2-speed axial piston motors with oil disk brakes. Steering controlled by two hand levers with pedals.

	Mono boom:
Max. Travel speed (High / Low)	5.3 / 3 km/h
	2-piece boom:
	4.4 / 2.4 km/h

Gradeability	35°/70%
--------------	---------

Max. Drawbar pull	Mono boom: 75 kN 2-piece boom: 80 kN
-------------------	---

SWING SYSTEM

Description

Planetary gear reduction driven by high torque axial piston motor, with oil disk brake. Swing parking brake resets within five seconds after swing pilot controls return to neutral.

Swing speed	10 rpm
-------------	--------

Swing torque	21,000 N-m
--------------	------------

HYDRAULIC SYSTEM

Main pump

Type	Axial piston variable pumps
------	-----------------------------

Maximum flow	210 L/min
--------------	-----------

Relief valve setting

Implement	31 MPa
-----------	--------

Travel circuit	31 MPa
----------------	--------

Slew circuit	24 MPa
--------------	--------

Pilot circuit	3.3 MPa
---------------	---------

Hydraulic cylinders

Boom cylinder – Bore x stroke	φ110 x 1,284 mm
-------------------------------	-----------------

Arm cylinder – Bore x stroke	φ100 x 1,328 mm
------------------------------	-----------------

Bucket cylinder – Bore x stroke	φ90 x 1,100 mm
---------------------------------	----------------

Auxiliary circuit 1 (AUX1) pressure and flow	5-120 L/min, 0-28 MPa
--	-----------------------

Auxiliary circuit 2 (AUX2) pressure and flow	5-70 L/min, 0-28 MPa
--	----------------------

SOUND PERFORMANCE

Interior sound power Level (ISO 6396 LpA)	73 dB(A)
---	----------

Exterior sound power Level (ISO 6395 LwA)	99 dB(A)
---	----------

ELECTRIC SYSTEM

System voltage	12 V
----------------	------

Batteries	1 x 12 V
-----------	----------

Alternator	12 V - 80 A
------------	-------------

Starter motor	12 V - 3 kW
---------------	-------------

SERVICE CAPACITIES

Fuel tank	110 L
-----------	-------

Engine oil	10.2 L
------------	--------

Final drive (each)	Mono boom: 1.1 L 2-piece boom: 1.6 L
--------------------	---

Cooling system	13.2 L
----------------	--------

Hydraulic reservoir	61.3 L
---------------------	--------

Hydraulic system total	150 L
------------------------	-------

UNDERCARRIAGE (MONO BOOM)

Track shoe each side	39
----------------------	----

Link pitch	154 mm
------------	--------

Shoe width, triple grouser	450 mm
----------------------------	--------

Bottom rollers each side	6
--------------------------	---

Top rollers each side	1
-----------------------	---

UNDERCARRIAGE (2-PIECE BOOM)

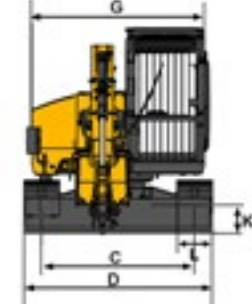
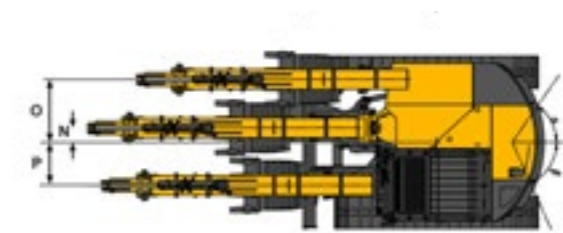
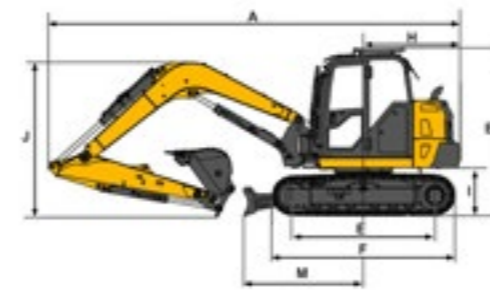
Track shoe each side	43
----------------------	----

Link pitch	154 mm
------------	--------

Shoe width, triple grouser	450 mm
----------------------------	--------

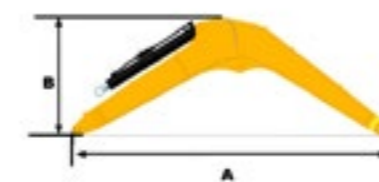
Bottom rollers each side	7
--------------------------	---

Top rollers each side	1
-----------------------	---



DIMENSIONS (MONO BOOM)

Boom	3,375 mm	
Arm options	1,650 mm	2,100 mm
A. Shipping length	6,337 mm	6,395 mm
B. Shipping height	2,570 mm	
B (a). Overall height of cab (with operator protective guard)	2,670 mm	
C. Track gauge	1,830 mm	
D. Undercarriage width- 450 mm shoes	2,280 mm	
E. Length to center of rollers	2,230 mm	
F. Track length	2,840 mm	
G. Overall width of upper structure	2,200 mm	
H. Tail swing radius	1,415 mm	
H (a). Tail swing radius with additional counterweight	1,510 mm	
I. Counterweight ground clearance	750 mm	
J. Overall height of boom	2,262 mm	2,405 mm
K. Min. Ground clearance	340 mm	
L. Track width	450 mm	
M. Distance from dozer blade to swing center	1,855 mm	
N. Front swing radius	200 mm	
O. Distance to swing center (swing right)	875 mm	
P. Distance to swing center (swing left)	600 mm	
α. Boom swing angle (left)	55°	
β. Boom swing angle (right)	65°	



BOOM (MONO BOOM)

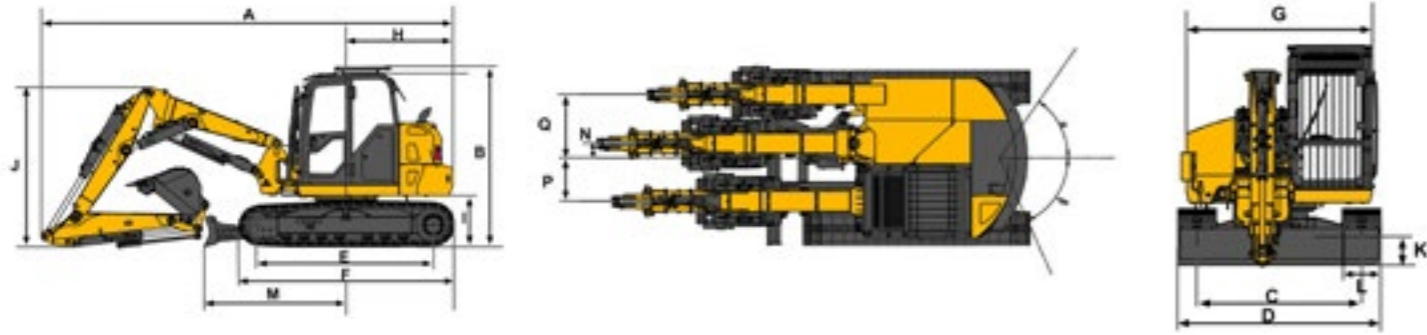
Boom	3,375 mm
A Length	3,510 mm
B Height	1,290 mm
C Width	424 mm
D Width (with boom hinge pin)	573 mm
Weight	550 kg

Cylinder, piping and pin included. Boom cylinder pin excluded.

ARM

Arm	1,650 mm	2,100 mm
A Length	2,205 mm	2,660 mm
B Height	510 mm	
C Width (with hinge pin)	390 mm	
Weight	276 kg	345 kg

Cylinder, linkage and pin included.



DIMENSIONS (2-PIECE BOOM)

Boom (Top/Lower)	2-piece boom
Arm options	1,650 mm
A. Shipping length	5,960 mm
B. Shipping height	2,570 mm
B (a). Overall height of cab (with operator protective guard)	2,670 mm
C. Track gauge	1,830 mm
D. Undercarriage width- 450 mm shoes	2,280 mm
E. Length to center of rollers	2,532 mm
F. Track length	3,135 mm
G. Overall width of upper structure	2,200 mm
H. Tail swing radius	1,415 mm
H (a). Tail swing radius with additional counterweight	1,510 mm
I. Counterweight ground clearance	750 mm
J. Overall height of boom	2,310 mm
K. Min. Ground clearance	340 mm
L. Track width	450 mm
M. Distance from dozer blade to swing center	2,055 mm
N. Front swing radius	200 mm
O. Distance to swing center (swing right)	875 mm
P. Distance to swing center (swing left)	600 mm
α. Boom swing angle (left)	55°
β. Boom swing angle (right)	65°

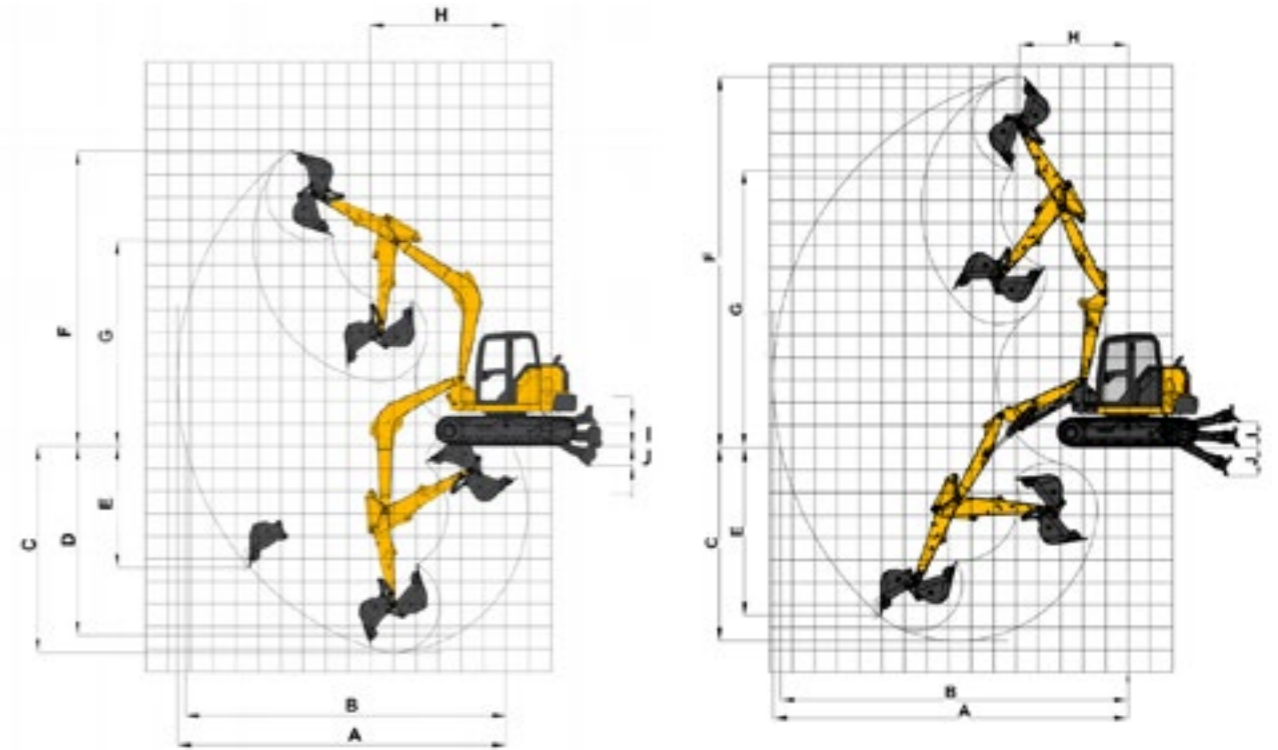


BOOM (2-PIECE BOOM)	TOP	LOWER
Boom	2,100 mm	2,011 mm
A Length	2,230 mm	2,146 mm
B Height	503 mm	632 mm
C Width		424 mm
D Width (with boom hinge pin)		625 mm
Weight	344 kg	372 kg

Cylinder, piping and pin included. Boom cylinder pin excluded.

ARM	
Arm	1,650 mm
A Length	2,205 mm
B Height	510 mm
C Width (with hinge pin)	390 mm
Weight	276 kg

Cylinder, linkage and pin included.



WORKING RANGE

	Mono boom	Mono boom	2-piece boom
Arm length	1,650 mm	2,100 mm	1,650 mm
A. Max. digging reach	6,860 mm	7,290 mm	7,490 mm
B. Max. digging reach at ground level	6,670 mm	7,110 mm	7,315 mm
C. Max. digging depth	4,130 mm	4,580 mm	3,860 mm
D. Max. digging depth at 2.5 m level	3,770 mm	4,205 mm	3,550 mm
E. Max. vertical wall digging depth	2,945 mm	3,405 mm	3,380 mm
F. Max. cutting height	6,290 mm	6,520 mm	7,840 mm
G. Max. Dumping height	4,315 mm	4,540 mm	5,550 mm
H. Min. Front swing radius	2,885 mm	2,900 mm	2,285 mm
Bucket digging force (ISO)	67 kN	67 kN	67 kN
Stick digging force (ISO)	46 kN	37 kN	46 kN
Bucket capacity	0.28 m ³	0.28 m ³	0.28 m ³
Bucket tip radius	1,043 mm	1,043 mm	1,043 mm

DOZER BLADE

Height	455 mm
Width	2,280 mm
I Lifting height	420 mm
J Digging depth	430 mm

MACHINE WEIGHTS AND GROUND PRESSURE (MONO BOOM)

Description	Shoe width	Operating weight	Ground pressure	Overall width
		3,375 mm boom, 1,650 arm, 0.28 m ³ bucket, 1,750 kg counterweight		
Rubber track	450 mm	8,915 kg	39.71 kPa	2,280 mm
Steel track	450 mm	9,135 kg	40.69 kPa	2,280 mm
Rubber pad	450 mm	9,440 kg	42.05 kPa	2,280 mm

MACHINE WEIGHTS AND GROUND PRESSURE (MONO BOOM)

Description	Shoe width	Operating weight	Ground pressure	Overall width
		3,375 mm boom, 2,100 arm, 0.28 m ³ bucket, 1,750 kg counterweight		
Rubber track	450 mm	8,970 kg	39.96 kPa	2,280 mm
Steel track	450 mm	9,190 kg	40.94 kPa	2,280 mm
Rubber pad	450 mm	9,495 kg	42.29 kPa	2,280 mm

MACHINE WEIGHTS AND GROUND PRESSURE (2-PIECE BOOM)

Description	Shoe width	Operating weight	Ground pressure	Overall width
		2-piece boom, 1,650 mm arm, 0.28 m ³ bucket, 2,100 kg counterweight		
Rubber track	450 mm	10,265 kg	40.70 kPa	2,280 mm
Steel track	450 mm	10,370 kg	41.11 kPa	2,280 mm
Rubber pad	450 mm	10,760 kg	42.66 kPa	2,280 mm

BUCKET SELECTION GUIDE

Bucket type	Capacity	Cutting width	Weight	Teeth pcs	Maximum material density
Trenching Bucket	0.17 m ³	450 mm	166 kg	3	A/B
General Purpose Bucket	0.23 m ³	605 mm	198 kg	4	A/B
General Purpose Bucket	0.28 m ³	770 mm	236 kg	4	A/B
General Purpose Bucket	0.32 m ³	795 mm	262 kg	5	A/B
Grading Bucket	0.5 m ³	1,228 mm	375 kg	0	A

The recommendations are given as a guide only, based on typical operation conditions. Bucket capacity based on ISO 7451, heaped material with a 1:1 angle of repose.

Maximum material density:
 A. 1,200-1,300 kg/m³: Coal, Caliche, Shale
 B. 1,400-1,600 kg/m³: Wet earth and clay, limestone, sandstone
 C. 1,700-1,800 kg/m³: Granite, wet sand, well blasted rock
 D. 1,900 kg/m³: Wet mud, Iron ore
 NA. Not applicable

Lifting capacity at the arm end without bucket.
For lifting capacity including bucket, weight of the bucket or the bucket with quick coupler must be deducted from the lifting capacities.
Lifting capacities are based on the machine standing on a firm, uniform supporting surface.



Rating over - front (Cf)



Rating over - side (Cs)

- Do not attempt to lift or hold any load that is greater than these rated values at their specified load radius and height. Weight of all accessories must be deducted from the above lifting capacities.
- The rated loads are in compliance with ISO 10567 Hydraulic Excavator Lift Capacity Rating Standard. They do not exceed 87% of hydraulic lifting capacity or 75% tipping load.
- Ratings at bucket lift hook.

- Lifting capacities are based on machine standing on level, firm and uniform ground.
- *Indicates the load is limited by hydraulic capacity rather than tipping capacity.
- Operator should be fully acquainted with the Operator's and Maintenance Instructions before operating this machine and rules for the safe operation of equipment should be adhered to at all times.

Lifting capacity at the arm end without bucket.
For lifting capacity including bucket, weight of the bucket or the bucket with quick coupler must be deducted from the lifting capacities.
Lifting capacities are based on the machine standing on a firm, uniform supporting surface.



Rating over - front (Cf)



Rating over - side (Cs)

- Do not attempt to lift or hold any load that is greater than these rated values at their specified load radius and height. Weight of all accessories must be deducted from the above lifting capacities.
- The rated loads are in compliance with ISO 10567 Hydraulic Excavator Lift Capacity Rating Standard. They do not exceed 87% of hydraulic lifting capacity or 75% tipping load.
- Ratings at bucket lift hook.

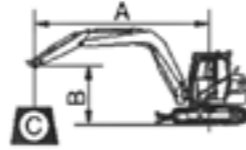
- Lifting capacities are based on machine standing on level, firm and uniform ground.
- *Indicates the load is limited by hydraulic capacity rather than tipping capacity.
- Operator should be fully acquainted with the Operator's and Maintenance Instructions before operating this machine and rules for the safe operation of equipment should be adhered to at all times.

LIFTING CAPACITY (MONO BOOM)

909FCR with 450 mm Shoes, 3,375 mm Boom, 2,100 mm Arm

Conditions

Boom length: 3,375 mm
Arm length: 2,100 mm
Bucket: None
Counterweight: 1,750 kg
Unit: kg



A: Load radius
B: Load point height
C: Lifting capacity
Cf: Rating over front
Cs: Rating over side

A (Unit: m) Blade: up

B (m)	2		3		4		5		6		MAX REACH		A (m)	
	Cf	Cs	Cf	Cs	Cf	Cs	Cf	Cs	Cf	Cs	Cf	Cs		
5.0	kg											*1,450	*1,450	4.93
4.0	kg						*1,390	*1,390				1,260	1,300	5.63
3.0	kg				*1,610	*1,610	1,510	*1,520	1,130	1,170	1,120	1,150	6.04	
2.0	kg		*3,100	*3,100	2,030	2,100	1,460	1,510	1,110	1,150	1,050	1,080	6.24	
1.0	kg		2,960	*3,010	1,940	2,000	1,410	1,460	1,090	1,120	1,030	1,060	6.24	
GROUND LEVEL	kg		2,880	3,000	1,880	1,940	1,380	1,420	1,070	1,110	1,070	1,100	6.04	
-1.0	kg	*2,790	*2,790	2,870	2,980	1,850	1,920	1,360	1,410		1,160	1,200	5.63	
-2.0	kg	*5,020	*5,020	2,900	3,010	1,860	1,930				1,400	1,450	4.93	
-3.0	kg	*4,980	*4,980	2,970	*3,010						2,130	*2,170	3.73	

A (Unit: m) Blade: down

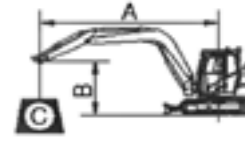
B (m)	2		3		4		5		6		MAX REACH		A (m)	
	Cf	Cs	Cf	Cs	Cf	Cs	Cf	Cs	Cf	Cs	Cf	Cs		
5.0	kg											*1,450	*1,450	4.93
4.0	kg						*1,390	*1,390				*1,480	1,300	5.63
3.0	kg				*1,610	*1,610	*1,520	*1,520	*1,520	1,170	*1,520	1,150	6.04	
2.0	kg		*3,100	*3,100	*2,130	2,100	*1,760	1,510	*1,600	1,150	*1,590	1,080	6.24	
1.0	kg		*3,010	*3,010	*2,630	2,000	*2,020	1,460	*1,720	1,120	*1,670	1,060	6.24	
GROUND LEVEL	kg		*3,530	3,000	*2,950	1,940	*2,200	1,420	*1,780	1,110	*1,770	1,100	6.04	
-1.0	kg	*2,790	*2,790	*4,500	2,980	*3,020	1,920	*2,240	1,410		*1,880	1,200	5.63	
-2.0	kg	*5,020	*5,020	*4,070	3,010	*2,790	1,930				*2,020	1,450	4.93	
-3.0	kg	*4,980	*4,980	*3,010	*3,010						*2,170	*2,170	3.73	

LIFTING CAPACITY (MONO BOOM)

909FCR with 450 mm Shoes, 3,375 mm Boom, 1,650 mm Arm

Conditions

Boom length: 3,375 mm
Arm length: 1,650 mm
Bucket: None
Counterweight: 1,750 kg
Unit: kg



A: Load radius
B: Load point height
C: Lifting capacity
Cf: Rating over front
Cs: Rating over side

A (Unit: m) Blade: up

B (m)	2		3		4		5		MAX REACH		A (m)		
	Cf	Cs	Cf	Cs	Cf	Cs	Cf	Cs	Cf	Cs			
5.0	kg										*1,630	*1,630	4.35
4.0	kg						*1,550	*1,550	1,490	1,540	1,420	1,460	5.15
3.0	kg			*2,360	*2,360	*1,880	*1,880	1,470	1,520	1,230	1,270	5.6	
2.0	kg				1,980	2,050	1,430	1,480	1,140	1,170	5.82		
1.0	kg				1,900	1,960	1,390	1,430	1,120	1,150	5.82		
GROUND LEVEL	kg			2,860	2,970	1,850	1,920	1,360	1,400	1,170	1,210	5.6	
-1.0	kg	*4,280	*4,280	2,870	2,980	1,850	1,910	1,360	1,400	1,310	1,350	5.15	
-2.0	kg	*5,900	*5,900	2,910	3,030	1,870	1,940			1,670	1,730	4.35	

A (Unit: m) Blade: down

B (m)	2		3		4		5		MAX REACH		A (m)		
	Cf	Cs	Cf	Cs	Cf	Cs	Cf	Cs	Cf	Cs			
5.0	kg										*1,630	*1,630	4.35
4.0	kg						*1,550	*1,550	*1,610	1,540	*1,630	1,460	5.15
3.0	kg			*2,360	*2,360	*1,880	*1,880	*1,700	1,520	*1,680	1,270	5.6	
2.0	kg				*2,360	2,050	*1,900	1,480	*1,740	1,170	5.82		
1.0	kg				*2,790	1,960	*2,110	1,430	*1,830	1,150	5.82		
GROUND LEVEL	kg			*4,550	2,970	*3,000	1,920	*2,230	1,400	*1,930	1,210	5.6	
-1.0	kg	*4,280	*4,280	*4,290	2,980	*2,950	1,910	*2,160	1,400	*2,050	1,350	5.15	
-2.0	kg	*5,900	*5,900	*3,650	3,030	*2,520	1,940			*2,180	1,730	4.35	

Lifting capacity at the arm end without bucket.
For lifting capacity including bucket, weight of the bucket or the bucket with quick coupler must be deducted from the lifting capacities.
Lifting capacities are based on the machine standing on a firm, uniform supporting surface.



Rating over - front (Cf)



Rating over - side (Cs)

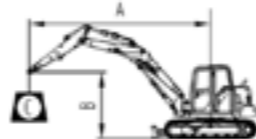
- Do not attempt to lift or hold any load that is greater than these rated values at their specified load radius and height. Weight of all accessories must be deducted from the above lifting capacities.
- The rated loads are in compliance with ISO 10567 Hydraulic Excavator Lift Capacity Rating Standard. They do not exceed 87% of hydraulic lifting capacity or 75% tipping load.
- Ratings at bucket lift hook.
- Lifting capacities are based on machine standing on level, firm and uniform ground.
- *Indicates the load is limited by hydraulic capacity rather than tipping capacity.
- Operator should be fully acquainted with the Operator's and Maintenance Instructions before operating this machine and rules for the safe operation of equipment should be adhered to at all times.

LIFTING CAPACITY (2-PIECE BOOM)

Conditions

A: Load radius
B: Load point height
C: Lifting capacity
Cf: Rating over front
Cs: Rating over side

Boom length: 2-piece boom
Arm length: 1,650 mm
Bucket: None
Counterweight: 2,100 kg
Unit: kg



A (Unit: m) Blade: up

B (m)		3		4		5		6		MAX REACH		
		Cf	Cs	Cf	Cs	Cf	Cs	Cf	Cs	Cf	Cs	A (m)
5.0	kg	*2,440	*2,440	*2,140	*2,140					*2,140	*2,140	4.06
4.0	kg			*1,980	*1,980	*1,790	1,620			1,760	1,510	5.17
3.0	kg	*2,710	*2,710	*2,100	*2,100	*1,790	1,610			1,440	1,240	5.83
2.0	kg			*2,390	2,200	1,820	1,560	1,370	1,170	1,280	1,100	6.23
1.0	kg			2,430	2,060	1,760	1,500	1,340	1,150	1,210	1,030	6.42
GROUND LEVEL	kg			2,330	1,960	1,700	1,450	1,320	1,120	1,200	1,020	6.42
-1.0	kg			2,300	1,930	1,670	1,420	1,300	1,110	1,240	1,060	6.23
-2.0	kg	*2,840	*2,840	2,300	1,930	1,670	1,410			*1,270	1,160	5.83
-3.0	kg	*2,050	*2,050	*1,720	*1,720	*1,190	*1,190			*1,020	*1,020	5.17

A (Unit: m) Blade: down

B (m)		3		4		5		6		MAX REACH		
		Cf	Cs	Cf	Cs	Cf	Cs	Cf	Cs	Cf	Cs	A (m)
6.0	kg	*2,440	*2,440	*2,140	*2,140					*2,140	*2,140	4.06
5.0	kg			*1,980	*1,980	*1,790	1,620			*1,790	1,510	5.17
4.0	kg	*2,710	*2,710	*2,100	*2,100	*1,790	1,610			*1,640	1,240	5.83
3.0	kg			*2,390	2,200	*1,890	1,560	*1,610	1,170	*1,560	1,100	6.23
2.0	kg			*2,690	2,060	*2,010	1,500	*1,640	1,150	*1,510	1,030	6.42
1	kg			*2,790	1,960	*2,070	1,450	*1,630	1,120	*1,450	1,020	6.42
GROUND LEVEL	kg			*2,650	1,930	*2,010	1,420	*1,520	1,110	*1,380	1,060	6.23
-1.0	kg	*2,840	*2,840	*2,310	1,930	*1,770	1,410			*1,270	1,160	5.83
-2.0	kg	*2,050	*2,050	*1,720	*1,720	*1,190	*1,190			*1,020	*1,020	5.17

STANDARD & OPTIONAL EQUIPMENT

ENGINE SYSTEM	STD	OPT
Yanmar engine, inline 4-cylinders, 4-stroke, water-cooled, natural aspiration, common rail, EGR, DPF	✓	
Air filter	✓	
Pre-filter with water separator	✓	
Engine oil filter	✓	
Auto-idle speed control	✓	
Radiator, oil cooler	✓	
Engine overheat prevention system	✓	

HYDRAULIC SYSTEM	STD	OPT
Main pump: one variable displacement piston pump	✓	
Boom and arm regeneration circuits	✓	
Boom and arm load holding valves	✓	
Pilot control shut-off lever	✓	
Dual-way auxiliary circuit via electronic proportional joystick control	✓	
Dozer blade load holding valve	✓	
Long dozer blade w/o float function	✓	
Quick coupler lines (low and high pressure)	✓	
SAE-BHL control pattern change	✓	
Attachment oil drain line	✓	
Auxiliary rotation line with flow adjustment	✓	
Dozer blade float function		✓

ELECTRICAL SYSTEM	STD	OPT
Alternator 12 V, 80 A	✓	
12 V battery	✓	
LED working lights on cab, 4 front and 2 rear	✓	
Starting, 12 V, 3 kW	✓	
Overloading warning	✓	
Rearview camera	✓	
Travel and swing alarms	✓	
Rotating beacon	✓	

BOOM & ARM	STD	OPT
3,375 mm boom	✓	
1,650 mm arm	✓	
2-piece boom		✓
2,100 mm arm		✓

DRIVETRAIN	STD	OPT
Hydraulic motor, piston type and two-gear reducer	✓	
2-speed travel system with automatic shift	✓	

SWING SYSTEM	STD	OPT
High-torque piston swing motor with integral spring set and automatic hydraulic release swing brake	✓	

INSTRUMENTATION	STD	OPT
7 inch color monitor with alarms, working hours, fuel level, water temperature, work mode, fault code, working status, etc	✓	
10 inch color monitor with alarms, working hours, fuel level, water temperature, work mode, fault code, working status, etc		✓

OPERATOR STATION	STD	OPT
ROPS certified cab		✓
Removable lower front windshield		✓
Front windshield wiper with intermittent feature		✓
Auto air conditioner with heater and defroster		✓
Heated air suspension seat		✓
3 inch retractable seatbelt		✓
AM/FM radio with bluetooth		✓
Glass-breaking hammer		✓
Cigarette lighter		✓
Cup holder		✓
Floor mat		✓
Fire extinguisher		✓
One key for all locks		✓
2-working mode selection system: Power, Economy		✓
Blind Spot mirror on cab rear right		✓

UNDERCARRIAGE	STD	OPT
Rubber track shoes, 450 mm		✓
Rollers, bottom - 6 each side, top - 1 each side (Mono boom)		✓
Towing eye on base frame		✓
Track gauge 1,830 mm		✓
Steel track shoes, 450 mm		✓
Steel track shoes with rubber pads, 450 mm		✓
Long carriage		✓

OTHER STANDARD EQUIPMENT	STD	OPT
Counterweight, 2,100 kg		✓
Maintenance tool kit		✓
Maintenance parts package		✓

DEMOLITION SPECIFICATION	STD	OPT
Operator protective guard (OPG)		✓
Bucket cylinder guard		✓

UPPERSTRUCTURE	STD	OPT
Heavy duty undercovers		✓

ATTACHMENT	STD	OPT
0.17 m³ general purpose bucket		✓
0.23 m³ general purpose bucket		✓
0.28 m³ general purpose bucket		✓
0.32 m³ general purpose bucket		✓
0.5 m³ ditch cleaning bucket		✓
Mechanical quick coupler		✓
Hydraulic quick coupler		✓
Hydraulic thumb		✓
LGB68 Hydraulic breaker		✓
LGB75 Hydraulic breaker		✓

SAFETY SYSTEM	STD	OPT
Seatbelt connected warning		✓



Guangxi LiuGong Machinery Co., Ltd.
No. 1 Liutai Road, Liuzhou, Guangxi 545007, PR China
T: +86 772 388 6124 E: overseas@liugong.com
www.liugong.com

Like and follow us:



LG-PB-909FCR-Stage V-A4-052026-ENG

Notice: All specifications, configurations, and performance data are subject to change without prior notice due to continuous technical upgrades. In case of any discrepancy, the latest technical documentation from the manufacturer shall prevail.

The LiuGong series of logos herein, including but not limited to word marks, device marks, letter of alphabet marks and combination marks, as the registered trademarks of Guangxi LiuGong Group Co., Ltd. are used by Guangxi LiuGong Machinery Co., Ltd. with legal permission, and shall not be used without permission. Specifications and designs are subject to change without notice. Illustrations and pictures may include optional equipment and may not include all standard equipment. Equipment and options varies by regional availability.