

LIUGONG

925FCR EXCAVATOR

F-SERIES

Engine	Cummins B6.7
Net Power	116 kW
Operating Weight	25,500-28,200 kg
Bucket Capacity	0.9-1.2 m ³



TOUGH WORLD. TOUGH EQUIPMENT.

BUILT FOR THE TOUGHEST APPLICATIONS

For over 65 years, LiuGong has built machines that thrive in the toughest environments. The 925FCR, part of our advanced F-Series, is engineered for maximum power, precision, and durability.

Designed to excel in demanding applications, this machine combines cutting-edge technology with proven reliability to keep you working efficiently in even the harshest conditions.

Since launching our first hydraulic excavator in 1992, we've remained committed to innovation, ensuring every LiuGong machine is built to perform, wherever the job takes you.



YOUR PERFORMANCE DASHBOARD

Research tells us that 5 key performance areas really matter to you. We'd like to use this performance dashboard to present the real, tough facts about our 925FCR.



COMPACT YET CAPABLE



VERSATILITY



OPERATOR COMFORT



SAFETY & VISIBILITY



MAINTENANCE & RELIABILITY

THIS IS LIUGONG



65+
YEARS
EST 1958



30+
PRODUCT LINES



12
GLOBAL R&D CENTERS



30+
GLOBAL OFFICES



16,000+
EMPLOYEES



20+
GLOBAL MANUFACTURING FACILITIES

THE 925FCR IN ACTION...

The 925FCR is designed with a short tail swing to meet the challenges of working in confined areas. The short-tail swing radius extends the machine adaptability for earthmoving and construction work to confined spaces, particularly in urban areas, or for road construction, forestry and demolition.



LET'S TAKE A CLOSER LOOK...



COMPACT WITHOUT COMPROMISE

Engineered for tight spaces, the 925FCR combines minimum front and rear short tail swing with EU Stage V compliant Cummins engine to deliver:

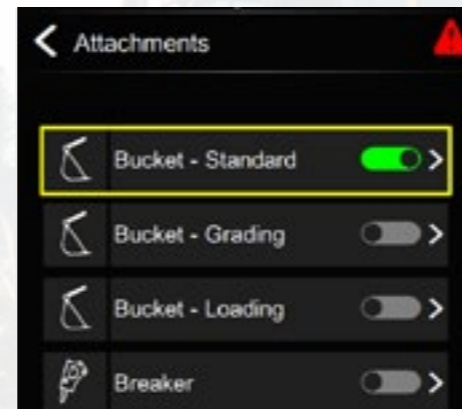
- ▶ Compact Radius – Superior swing performance when working in confined areas.
- ▶ Productivity & Fuel Efficiency – High torque at low engine speeds with an increased power efficiency of 5% and 15% reduction in fuel consumption.
- ▶ Three Power Modes (Power/Standard/Economy) – Tailored power and efficiency to match specific tasks.



TACKLE ANY JOB SITE CHALLENGES

From general construction to heavy duty work conditions, the 925FCR offers exceptional versatility to meet any job demands.

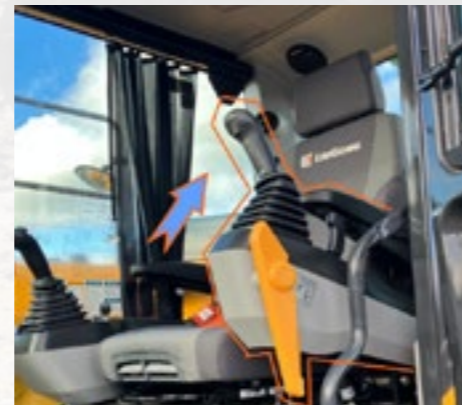
- ▶ Smart Attachment Management – Adjustable flow and pressure for optimal performance with any attachments.
- ▶ Demolition Toughness – Full protective package including operator protective guards, reinforced guards, bucket cylinder protection and bolt-on side guards.
- ▶ Earthmoving Efficiency – Optional dozer blade for efficient ground levelling.
- ▶ Extended Reach – 2-piece boom option increases working range and digging depth.



STAY COMFORTABLE, WORK LONGER

The upgraded F-Series cab delivers exceptional comfort with:

- ▶ Intelligent Operator Tuning – Customizable hydraulic settings to meet application requirements and varying operator preferences.
- ▶ F-Series Cab – Spacious ergonomic design featuring 10.1-inch touchscreen, standard heated air-suspension seat, optional ventilation, and tilting roof for all-day comfort.



BUILT FOR SAFETY IN EVERY CONDITION

Every feature is engineered to minimize risks—from blind spots to anti-slip surfaces – keeping operators protected in all conditions.

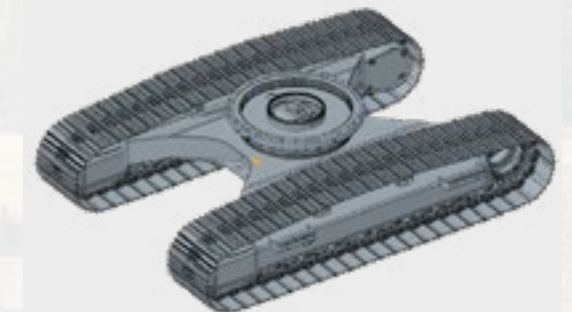
- ▶ All-round Visibility – Standard 360° cameras with side lighting eliminate blind spots and enhance safety in low-light conditions.
- ▶ Orange Handrails – High-visibility orange guardrails and steps prevent slips/falls during machine entry and exit.
- ▶ Parallel windshield wipers deliver wider coverage, clearing rain, snow, dirt, and debris to maximized visibility in harsh conditions.



ENGINEERED FOR MAXIMUM UPTIME

The 925FCR delivers more working hours, lower maintenance costs, and maximum machine availability with:

- ▶ Synchronized Service Interval – All filters have been synchronised to replace every 500 hours to reduce downtime.
- ▶ Strong Undercarriage – The undercarriage is designed with X-frame for optimal maintenance and minimal downtime.
- ▶ Longer Component Life – Automatic lubrication system reduces the need for manual lubrication and extends component life.
- ▶ 5,000-Hour Hydraulic Oil – Optional long-life hydraulic oil delivers an extended service life of up to 2.5 times than that of conventional hydraulic oils, reducing change frequency and downtime.



925FCR SPECIFICATIONS

Operating weight	25,500-28,200 kg
Operating weight includes coolant, lubricants, full fuel tank, cab, standard shoes, boom, arm, bucket and operator 75 kg.	
Bucket capacity	0.9-1.2 m³

ENGINE

Description

Cummins EPA Tier 4 final / EU Stage V, 6-cylinder straight Variable-Geometry Turbocharger (VGT), high pressure common rail, electronically controlled direct injection. Air cleaner: Cummins direct flow air filter. Cooling system: Air-to-air intercooler

Emission rating	EPA Tier 4 final / EU Stage V
Engine manufacturer	Cummins
Engine model	B6.7
Aspiration	Variable-Geometry Turbocharger (VGT)
Charged air cooling	Aftercooler
Cooling fan drive	Electric motor
Displacement	6.7 L
Engine output - net (SAE J1349 / ISO 9249)	116 kW @ 2,200 rpm
Engine output - rated (SAE J1995 / ISO 14396)	116 kW @ 2,200 rpm
Maximum torque	746 N-m @ 1,300 rpm
Bore x Stroke	107 x 124 mm

DRIVE AND BRAKES

Description

2-speed axial piston motors with oil disk brakes. Steering controlled by two hand levers with pedals.

Max. travel speed	High: 5.4 km/h Low: 3.1 km/h
Gradeability	35%/70%
Max. drawbar pull	220 kN

HYDRAULIC SYSTEM

Main pump

Type	Two variable displacement piston pumps
Maximum flow	2 x 228 L/min

Pilot pump

Type	Gear pump
Maximum flow	17.5 L/min

Relief valve setting

Implement	34.3 / 37.3 MPa
Travel circuit	34.3 MPa
Slew circuit	31 MPa
Pilot circuit	3.9 MPa

Hydraulic cylinders

Boom Cylinder – Bore x Stroke	Φ125 x 1,353 mm
Stick Cylinder – Bore x Stroke	Φ135 x 1,490 mm
Bucket Cylinder – Bore x Stroke	Φ115 x 1,120 mm

SWING SYSTEM

Description

Planetary gear reduction driven by high torque axial piston motor, with oil disk brake. Swing parking brake resets within five seconds after swing pilot controls return to neutral.

Swing speed	10.5 rpm
Swing torque	78,000 N-m

ELECTRIC SYSTEM

System Voltage	24 V
Batteries	2 x 12 V
Alternator	24 V-180 A
Start motor	24 V -7.8 kW

UNDERCARRIAGE

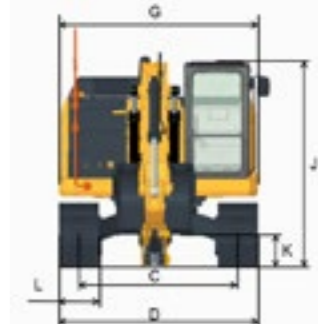
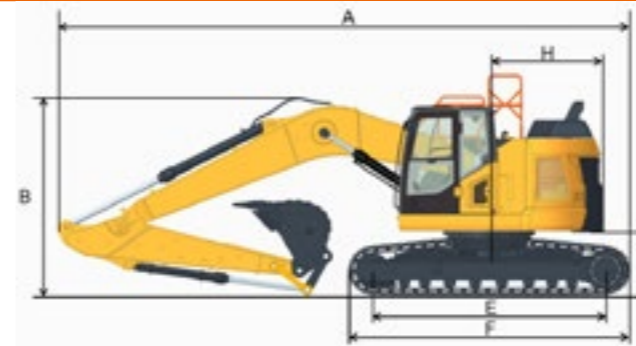
Track shoe each side	49
Link pitch	190 mm
Shoe width, triple grouser	600 mm
Bottom rollers each side	8
Top rollers each side	2

SERVICE CAPACITIES

Fuel tank	320 L
Engine oil	25 L
Final drive (each)	5.5 L
Swing drive	3.4 L
Cooling system	25 L
Hydraulic reservoir	182 L
Hydraulic system total	320 L
DEF tank	44 L

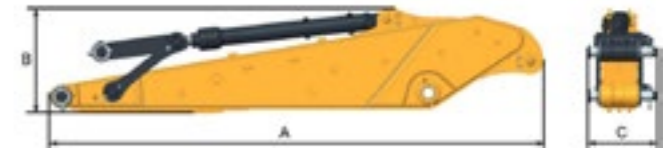
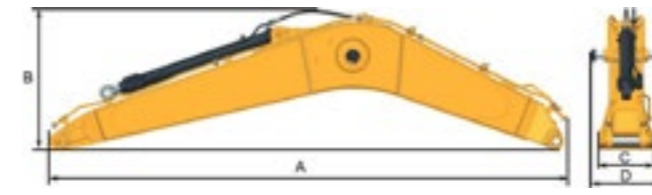
SOUND PERFORMANCE

Interior sound power level (ISO 6396)	69 dB(A)
Exterior sound power level (ISO 6395)	100 dB(A)



DIMENSIONS 925FCR

Boom	5,710 mm	5,710 mm
Arm Options	2,915 mm	2,400 mm
A Shipping Length	8,960 mm	9,670 mm
B Shipping Height – Top of Boom	3,060 mm	3,150 mm
C Track Gauge	2,390 mm	
D Undercarriage Width – 600 mm shoes	2,990 mm	
	700 mm shoes	3,090 mm
	800 mm shoes	3,190 mm
	900 mm shoes	3,290 mm
E Length to Center of Rollers	3,650 mm	
F Track Length	4,450 mm	
G Overall Width of Upper Structure	2,990 mm	
H Tail Swing Radius	1,780 mm	
I Counterweight Ground Clearance	1,010 mm	
J Overall Height of Cab	2,980 mm	
J (i) Height of Cab Including Lighting Halo	3,060 mm	
J (ii) Height of Cab Including FOPS Guard	3,120 mm	
K Min. Ground Clearance	470 mm	
L Track Shoe Width	600 mm	



BOOM DIMENSIONS 925FCR

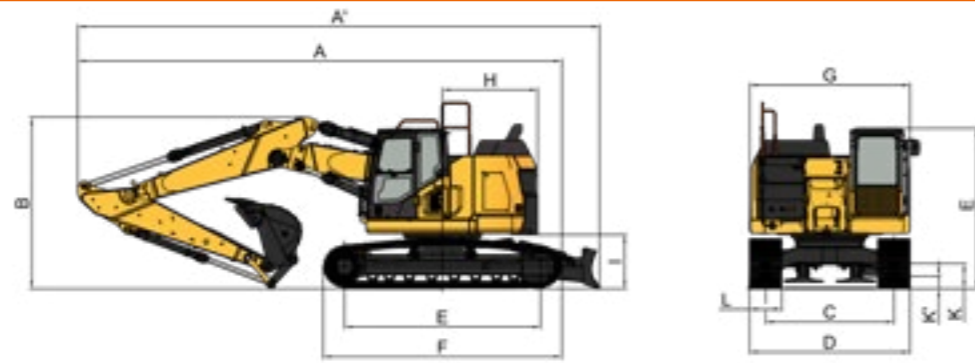
Boom	5,710 mm
A Length	5,898 mm
B Height	1,630 mm
C Width	622 mm
D Width	788 mm
Weight	2,120 kg

Includes arm cylinder, piping and pin.

ARM DIMENSIONS

Arm	2,915 mm	2,400 mm
A Length	3,918 mm	3,375 mm
B Height	826 mm	820 mm
C Width	476 mm	476 mm
Weight	1,115 kg	1,030 kg

Includes bucket cylinder, linkage and pin.



DIMENSIONS	925FCR TPB
Boom	5,700 mm
Arm Length	2,915 mm
A Shipping Length	9,010 mm
A' Shipping Length (with dozar)	9,720 mm
B Shipping Height – Top of Boom	3,200 mm
C Track Gauge	2,390 mm
D Undercarriage Width – 600 mm shoes	2,990 mm
700 mm shoes	3,090 mm
800 mm shoes	3,190 mm
900 mm shoes	3,290 mm
E Length to Center of Rollers	3,650 mm
F Track Length	4,450 mm
G Overall Width of Upper Structure	2,990 mm
H Tail Swing Radius	1,780 mm
I Counterweight Ground Clearance	1,010 mm
J Overall Height of Cab	2,980 mm
J (i) Height of Cab Including Lighting Halo	3,060 mm
J (ii) Height of Cab Including FOPS Guard	3,120 mm
K Min. Ground Clearance	470 mm
L Track Shoe Width	600 mm

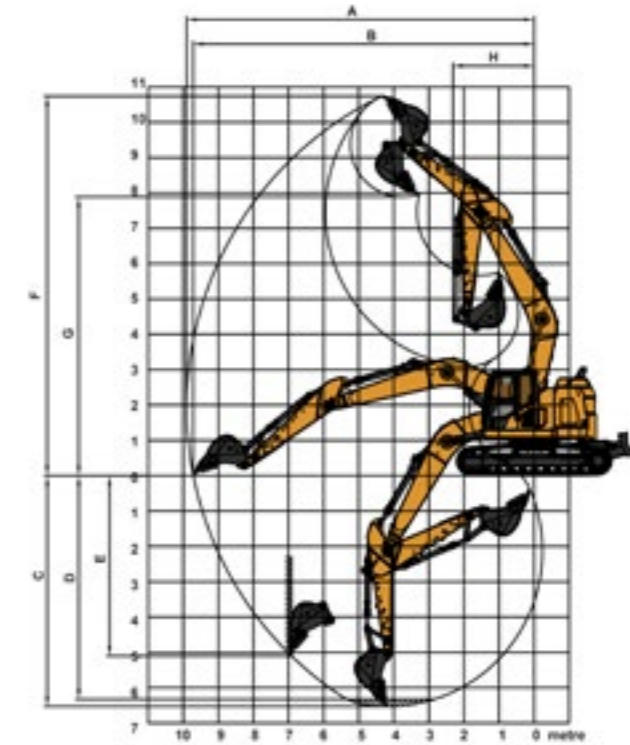


BOOM DIMENSIONS	925FCR TPB
Boom	5,700 mm
A Length	5,885 mm
B Height	1,440 mm
C Width	622 mm
D Width	788 mm
Weight	2,860 kg

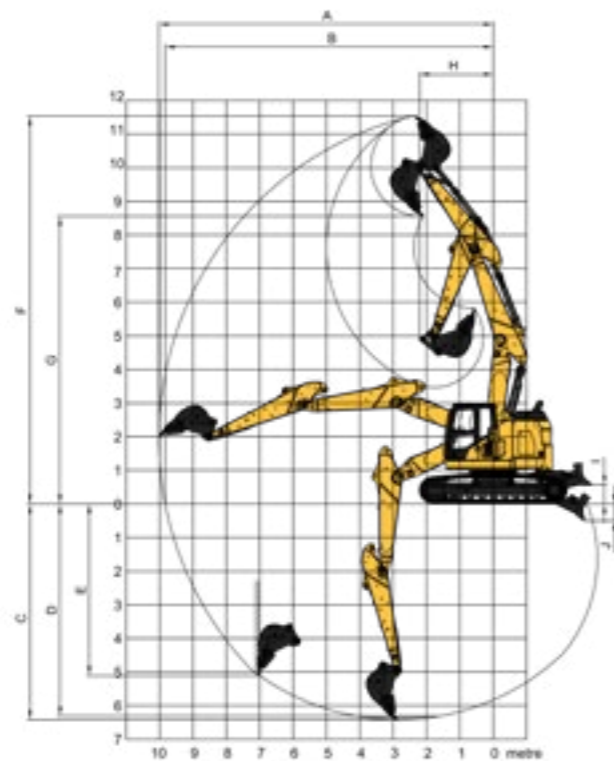
Includes arm cylinder, piping and pin.

ARM DIMENSIONS		
Arm	2,915 mm	2,400 mm
A Length	3,918 mm	3,375 mm
B Height	826 mm	820 mm
C Width	476 mm	476 mm
Weight	1,115 kg	1,030 kg

Includes bucket cylinder, linkage and pin.



WORKING RANGE	925FCR		
Boom Length	5,710 mm	5,710 mm	
Arm Length	2,915 mm	2,400 mm	
A. Max. Digging Reach	9,906 mm	9,530 mm	
B. Max. Digging Reach on Ground	9,720 mm	9,360 mm	
C. Max. Digging Depth	6,530 mm	6,250 mm	
D. Max. Digging Depth, 2.44 m Level	6,330 mm	6,050 mm	
E. Max. Vertical Wall Digging Depth	5,100 mm	5,175 mm	
F. Max. Cutting Height	10,740 mm	9,810 mm	
G. Max. Dumping Height	7,890 mm	7,010 mm	
H. Min. Front Swing Radius	2,310 mm	3,210 mm	
Bucket Digging Force (ISO)	Normal	140 kN	140 kN
	Power Boost	153 kN	153 kN
Stick Digging Force (ISO)	Normal	97 kN	116 kN
	Power Boost	105 kN	126 kN
Bucket Capacity	1.0 m ³	1.0 m ³	
Bucket Tip Radius	1,478 mm	1,478 mm	



WORKING RANGE		925FCR TPB
Boom Length		5,700 mm
Arm Length		2,915 mm
A. Max. Digging Reach		10,020 mm
B. Max. Digging Reach on Ground		9,830 mm
C. Max. Digging Depth		6,420 mm
D. Max. Digging Depth, 2.44 m Level		6,310 mm
E. Max. Vertical Wall Digging Depth		5,100 mm
F. Max. Cutting Height		11,540 mm
G. Max. Dumping Height		8,560 mm
H. Min. Front Swing Radius		2,210 mm
Bucket Digging Force (ISO)	Normal	140 kN
	Power Boost	152.5 kN
Stick Digging Force (ISO)	Normal	97 kN
	Power Boost	105 kN
Bucket Capacity		1.0 m ³
Bucket Tip Radius		1,478 mm

MACHINE WEIGHTS AND GROUND PRESSURE

Shoe width	925FCR			925FCR TPB		
	Operating weight	Ground pressure	Overall width	Operating weight	Ground pressure	Overall width
	5,710 mm boom, 2,915 mm arm, 1.0 m ³ bucket, 6,400 kg counterweight			5,700 mm boom, 2,915 mm arm, 1.0 m ³ , with dozar, 6,400 kg counterweight		
600 mm	25,800 kg	53.7 kPa	2,990 mm	28,400 kg	59.1 kPa	2,990 mm
700 mm	26,200 kg	46.7 kPa	3,090 mm	28,800 kg	51.4 kPa	3,090 mm
800 mm	26,500 kg	41.4 kPa	3,190 mm	29,100 kg	45.4 kPa	3,190 mm
900 mm	26,650 kg	37 kPa	3,290 mm	29,250 kg	40.6 kPa	3,290 mm

BUCKET SELECTION GUIDE

Bucket type	Capacity	Cutting width	Weight	Teeth pcs	5.71 m or 5.7 m Boom	
					2.4 m Arm	2.915 m Arm
Earth type	0.9 m ³	1,200 mm	734 kg	5	B	B
Earth type	1.0 m ³	1,260 mm	779 kg	5	B	B
Earth type	1.1 m ³	1,330 mm	806 kg	5	B	B
Earth type	1.2 m ³	1,390 mm	831 kg	5	B	B
General type	1.0 m ³	1,260 mm	859 kg	5	C	C
General type	1.1 m ³	1,330 mm	896 kg	5	C	C
Rock type	1.0 m ³	1,300 mm	1,046 kg	5	D	D
Rock type	1.1 m ³	1,370 mm	1,095 kg	5	D	D

The recommendations are given as a guide only, based on typical operation conditions. Bucket capacity based on ISO 7451, heaped material with a 1:1 angle of repose.

Maximum material density:
 A. 1,200-1,300 kg/m³ : Coal, Caliche, Shale
 B. 1,400-1,600 kg/m³ : Wet earth and clay, limestone, sandstone
 C. 1,700-1,800 kg/m³ : Granite, wet sand, well blasted rock
 D. 1,900 kg/m³ : Wet mud, Iron ore
 NA. Not applicable

Lifting capacity at the arm end without bucket.
For lifting capacity including bucket, weight of the bucket or the bucket with quick coupler must be deducted from the lifting capacities.
Lifting capacities are based on the machine standing on a firm, uniform supporting surface.



Rating over-front (Cf)



Rating over-side (Cs)

- Do not attempt to lift or hold any load that is greater than these rated values at their specified load radius and height. Weight of all accessories must be deducted from the above lifting capacities.
- The rated loads are in compliance with ISO 10567 Hydraulic Excavator Lift Capacity Rating Standard. They do not exceed 87% of hydraulic lifting capacity or 75% tipping load.
- Ratings at bucket lift hook.
- Lifting capacities are based on machine standing on level, firm and uniform ground.
- *Indicates the load is limited by hydraulic capacity rather than tipping capacity.
- Operator should be fully acquainted with the Operator's and Maintenance Instructions before operating this machine and rules for the safe operation of equipment should be adhered to at all times.

LIFTING CAPACITY

925FCR with 700 mm Shoes, 5,710 mm Boom, 2,915 mm Arm

A: Load radius
B: Load point height
C: Lifting capacity rating
Cf: Rating loads over front
Cs: Rating loads over side

Conditions:
Boom length: 5,710 mm
Arm length: 2,915 mm
Bucket: None
counterweight: 6,400 kg
Shoes: 700 mm triple grouser
Unit: kg



B (m)	A (Unit: m)												MAX REACH A (m)	
	3		4.5		6		7.5		8					
	Cf	Cs	Cf	Cs	Cf	Cs	Cf	Cs	Cf	Cs	Cf	Cs		
7.5	kg			*4,389	*4,389	*4,615	*4,615					*4,008	*4,008	6.2
6.0	kg			*4,837	*4,837	*4,847	*4,847					*3,792	*3,792	7.3
4.5	kg	*7,945	*7,945	*6,179	*6,179	*5,443	5,255	*5,149	3,735			*3,607	3,361	8
3.0	kg			*8,125	7,476	*6,351	4,987	*5,557	3,621	*5,414	3,288	*4,000	3,106	8.3
1.5	kg			*9,914	6,943	*7,281	4,729	5,982	3,496	5,451	3,196	*4,029	2,983	8.4
GROUND LEVEL	kg	*6,240	*6,240	*10,904	6,672	*7,956	4,554	5,883	3,406	5,381	3,133	*4,388	3,035	8.2
-1.5	kg	*10,467	*10,467	*11,082	6,613	8,021	4,490	5,863	3,388			5,761	3,335	7.6
-3.0	kg	*14,991	12,654	*10,491	6,705	*7,804	4,547					*6,649	3,903	6.8

LIFTING CAPACITY

925FCR with 700 mm Shoes, 5,710 mm Boom, 2,915 mm Arm, with dozer

A: Load radius
B: Load point height
C: Lifting capacity rating
Cf: Rating loads over front
Cs: Rating loads over side

Conditions:
Boom length: 5,710 mm
Arm length: 2,915 mm
Bucket: None
counterweight: 6,400 kg
Shoes: 700 mm triple grouser
Unit: kg



B (m)	A (Blade Up)												MAX REACH A (m)	
	3		4.5		6		7.5		8					
	Cf	Cs	Cf	Cs	Cf	Cs	Cf	Cs	Cf	Cs	Cf	Cs		
7.5	kg			*4,389	*4,389	*4,615	*4,615					*4,008	*4,008	6.2
6.0	kg			*4,837	*4,837	*4,847	*4,847					*3,792	3,711	7.3
4.5	kg	*7,945	*7,945	*6,179	*6,179	*5,443	4,946	*5,149	3,500			*3,607	3,143	8
3.0	kg			*8,125	7,027	*6,351	4,678	*5,557	3,385	*5,414	3,070	*4,000	2,898	8.3
1.5	kg			*9,914	6,494	*7,281	4,420	5,874	3,260	5,351	2,978	*4,029	2,777	8.4
GROUND LEVEL	kg	*6,240	*6,240	*10,904	6,223	7,947	4,246	5,774	3,171	5,281	2,915	*4,388	2,823	8.2
-1.5	kg	*10,467	*10,467	*11,082	6,164	7,873	4,182	5,755	3,153			5,655	3,104	7.6
-3.0	kg	*14,991	11,832	*10,491	6,256	*7,804	4,238					*6,649	3,638	6.8

LIFTING CAPACITY

925FCR with 700 mm Shoes, 5,710 mm Boom, 2,915 mm Arm, with dozer

A: Load radius
B: Load point height
C: Lifting capacity rating
Cf: Rating loads over front
Cs: Rating loads over side

Conditions:
Boom length: 5,710 mm
Arm length: 2,915 mm
Bucket: None
counterweight: 6,400 kg
Shoes: 700 mm triple grouser
Unit: kg



B (m)	A (Blade Down)												MAX REACH A (m)	
	3		4.5		6		7.5		8					
	Cf	Cs	Cf	Cs	Cf	Cs	Cf	Cs	Cf	Cs	Cf	Cs		
7.5	kg			*4,389	*4,389	*4,615	*4,615					*4,008	*4,008	6.2
6.0	kg			*4,837	*4,837	*4,847	*4,847					*3,792	3,711	7.3
4.5	kg	*7,945	*7,945	*6,179	*6,179	*5,443	4,946	*5,149	3,500			*3,607	3,143	8
3.0	kg			*8,125	7,027	*6,351	4,678	*5,557	3,385	*5,414	3,070	*4,000	2,898	8.3
1.5	kg			*9,914	6,494	*7,281	4,420	*6,035	3,260	*5,773	2,978	*4,029	2,777	8.4
GROUND LEVEL	kg	*6,240	*6,240	*10,904	6,223	*7,956	4,246	*6,399	3,171	*6,033	2,915	*4,388	2,823	8.2
-1.5	kg	*10,467	*10,467	*11,082	6,164	*8,198	4,182	*6,439	3,153			*6,243	3,104	7.6
-3.0	kg	*14,991	11,832	*10,491	6,256	*7,804	4,238					*6,649	3,638	6.8

LIFTING CAPACITY

925FCR TPB with 600 mm Shoes, 5,700 mm Boom, 2,915 mm Arm

A: Load radius
B: Load point height
C: Lifting capacity rating
Cf: Rating loads over front
Cs: Rating loads over side

Conditions:
Boom length: 5,700 mm
Arm length: 2,915 mm
Bucket: None
counterweight: 6,400 kg
Shoes: 600 mm triple grouser
Unit: kg



B (m)	A (Unit: m)												MAX REACH A (m)	
	3		4.5		6		7.5		8					
	Cf	Cs	Cf	Cs	Cf	Cs	Cf	Cs	Cf	Cs	Cf	Cs		
9.0	kg											*4,564	*4,564	3.9
7.5	kg			*5,788	*5,788							*3,850	*3,850	5.9
6.0	kg			*6,116	*6,116	*5,717	5,342					*3,845	*3,845	7
4.5	kg	*9,566	*9,566	*7,265	*7,265	*6,193	5,145	*4,687	3,599			*3,850	3,439	7.7
3.0	kg	*12,180	*12,180	*8,912	7,327	*6,929	4,846	*5,929	3,476	*4,353	3,138	*3,781	3,075	8.1
1.5	kg			*10,319	6,698	*7,631	4,546	5,803	3,333	*5,212	3,035	*4,557	2,980	8.1
GROUND LEVEL	kg	*7,761	*7,761	*10,888	6,350	7,841	4,333	5,683	3,225			*5,076	3,010	7.9
-1.5	kg	*11,931	11,700	*10,585	6,250	7,739	4,244					5,757	3,252	7.4
-3.0	kg	*12,855	11,955	*9,384	6,331	*6,949	4,297					*6,345	3,968	6.4

LIFTING CAPACITY

925FCR TPB with 600 mm Shoes, 5,700 mm Boom, 2,915 mm Arm, with dozer

A: Load radius
B: Load point height
C: Lifting capacity rating
Cf: Rating loads over front
Cs: Rating loads over side

Conditions:

Boom length: 5,700 mm
Arm length: 2,915 mm
Bucket: None
counterweight: 6,400 kg
Shoes: 600 mm triple grouser
Unit: kg



A (Blade Up)

B (m)	3		4.5		6		7.5		8		MAX REACH		A (m)	
	Cf	Cs	Cf	Cs	Cf	Cs	Cf	Cs	Cf	Cs	Cf	Cs		
9.0	kg										*4,564	*4,564	3.9	
7.5	kg		*5,788	*5,788							*3,850	*3,850	5.9	
6.0	kg		*6,116	*6,116	*5,717	5,132					*3,845	*3,845	7	
4.5	kg	*9,566	*9,566	*7,265	*7,265	*6,193	4,936	*4,687	3,440		*3,850	3,285	7.7	
3.0	kg	*12,180	*12,180	*8,912	7,022	*6,929	4,636	*5,929	3,316	*4,353	2,991	*3,781	2,929	8.1
1.5	kg		*10,319	6,394	*7,631	4,336	5,792	3,173	*5,212	2,887	*4,557	2,834	8.1	
GROUND LEVEL	kg	*7,761	*7,761	*10,888	6,046	7,827	4,124	5,673	3,066		*5,076	2,860	7.9	
-1.5	kg	*11,931	11,143	*10,585	5,945	7,724	4,035				5,746	3,090	7.4	
-3.0	kg	*12,855	11,398	*9,384	6,027	*6,949	4,088				*6,345	3,774	6.4	

LIFTING CAPACITY

925FCR TPB with 600 mm Shoes, 5,700 mm Boom, 2,915 mm Arm, with dozer

A: Load radius
B: Load point height
C: Lifting capacity rating
Cf: Rating loads over front
Cs: Rating loads over side

Conditions:

Boom length: 5,700 mm
Arm length: 2,915 mm
Bucket: None
counterweight: 6,400 kg
Shoes: 600 mm triple grouser
Unit: kg



A (Blade Down)

B (m)	3		4.5		6		7.5		8		MAX REACH		A (m)	
	Cf	Cs	Cf	Cs	Cf	Cs	Cf	Cs	Cf	Cs	Cf	Cs		
9.0	kg										*4,564	*4,564	3.9	
7.5	kg		*5,788	*5,788							*3,850	*3,850	5.9	
6.0	kg		*6,116	*6,116	*5,717	5,132					*3,845	*3,845	7	
4.5	kg	*9,566	*9,566	*7,265	*7,265	*6,193	4,936	*4,687	3,440		*3,850	3,285	7.7	
3.0	kg	*12,180	*12,180	*8,912	7,022	*6,929	4,636	*5,929	3,316	*4,353	2,991	*3,781	2,929	8.1
1.5	kg		*10,319	6,394	*7,631	4,336	*6,234	3,173	*5,212	2,887	*4,557	2,834	8.1	
GROUND LEVEL	kg	*7,761	*7,761	*10,888	6,046	*8,018	4,124	*6,356	3,066		*5,076	2,860	7.9	
-1.5	kg	*11,931	11,143	*10,585	5,945	*7,889	4,035				*5,944	3,090	7.4	
-3.0	kg	*12,855	11,398	*9,384	6,027	*6,949	4,088				*6,345	3,774	6.4	

STANDARD EQUIPMENT

ENGINE

Cummins B6.7 engine, EPA Tier 4F/EU Stage V, turbocharged, 6-cylinder, 4-stroke, water-cooled

Electric refueling pump with auto shutoff

HYDRAULIC SYSTEM

Dual-way auxiliary circuit via electronic proportional joystick control

On-screen auxiliary line switching, one-way or two-way

Pressure adjustable quick coupler line

BOOM & ARM

5,710 mm boom

2,915 mm arm

Boom & arm load holding valves

OPERATOR STATION

ROPS certified cab

10 inch high resolution touch screen

Heating and cooling air conditioning

Fire extinguisher

Heated air suspension seat with 3 inch red retractable seatbelt

Tilting pod

Sun visor

12V power outlet

DAB radio

ELECTRICAL

Warnings: low engine oil pressure, low fuel level, air filter clog, machine overheat, and maintenance reminder

Parallel wiper

4 LED lights on the boom

2 LED lights on the counterweight

4 LED lights front and 2 LED lights on the rear of the cab

LED light bars on the front and rear of the cab

360-degree cameras with side lighting

Rotating beacon

Travel alarm

Swing alarm

Overload warning

Quick coupler on warning

T-BOX

UNDERCARRIAGE

Rollers, top - 2 each side

Rollers, bottom - 8 each side

600 mm track-shoes with triple grousers

Track chain, 3 each side

UPPER STRUCTURE

Guardrails

Left-hand side rear-view mirror

Right-hand side rear-view mirror

2mm under covers

6,400 kg counterweight

OPTIONAL EQUIPMENT

HYDRAULIC SYSTEM

Hydraulic hammer return oil filtration

Boom float function

OPERATOR STATION

Heated and ventilated suspension seat

DEMOLITION SPEC

Reinforced undercovers

LED light bars on the front and rear of the cab

Operation protection guard (includes cab front and top guard, bar)

Bucket cylinder guard

Platform side guard

UPPERSTRUCTURE

Upper frame guard

UNDERCARRIAGE

700 mm track shoes, triple grouser

800 mm track shoes, triple grouser

900 mm steel track shoes, triple grouser

SERVICE & MAINTENANCE

Long-life hydraulic oil (change interval 5,000 hours)

Centralized lubrication system

BOOM & ARM

2-piece boom

2,400 mm arm

ATTACHMENT

0.9 m³ earth-moving bucket

1.1 m³ general purpose bucket

1.2 m³ light duty digging bucket

Hydraulic quick coupler



Guangxi LiuGong Machinery Co., Ltd.
No. 1 Liutai Road, Liuzhou, Guangxi 545007, PR China
T: +86 772 388 6124 E: overseas@liugong.com
www.liugong.com

Like and follow us:



LG-PB-925FCR-Stage V-A4-062025-ENG

The LiuGong series of logos herein, including but not limited to word marks, device marks, letter of alphabet marks and combination marks, as the registered trademarks of Guangxi LiuGong Group Co., Ltd. are used by Guangxi LiuGong Machinery Co., Ltd. with legal permission, and shall not be used without permission. Specifications and designs are subject to change without notice. Illustrations and pictures may include optional equipment and may not include all standard equipment. Equipment and options varies by regional availability.